

Pieza para guitarra, flauta y ordenador

Sergio Fabian Lavia

I

♩ = 56

Guitar

① *pp* *mp* *p* *pp*

B *mp* *mp* *p* *pp*

5 *mp* *mf* *mp* *pp*

SP m.vib **M** *mf* *mp* *pp*

ST XII

② *mf* *mp* m.vib *mf* *mp* *pp*

M *mf* *mp* m.vib *mf* *mp* *pp*

B *mp* *f* *mp* *p*

SP *p* *p*

M *pp* m.vib *p* *p*

1

4 5 6

7 7 2 1

mp *pp* *pp* *mf*

[M] [ST]

CI

2 2 4 2

[ST]

[SP] *mp*

3

4

2 3

2 2 2

mf *pp* *mp* *pp*

[M] [ST] [B]

RH

1 9

4 4 4

2 4 4

1 7 7 7

0 6

3 6 9

mp *mf* *f*

[M]

Presto

CI CIV CVI

i *m* *P* *i* *m* *a* *i* *P* *i*

mf *f*

[SP] [ST] [M]

harmonizer ↓8va

f *p* *m* *a* *i* *m* *a* *m* *i* *a*

CVI B SP

mp *ff*

M fff

B M pp ST ppp stop harmonizer

Tempo I

p *mp*

M SP

B p pp ST SP f M mf

II

← 5" →

10"

20"

Guitar

p a m i

p m i

p m

[M] *mp*

[B] *mp*

[ST] *mp*

harmonizer ↓4ta

delay 1 - 2

Tape

40"

Flute

mp

[SP]

fff lasciare vibrare

5

1'00"

mf $\langle f \rangle \langle f \rangle \langle f \rangle$ noise air

③ ②
④ ③
mp

bells

1'20"

mf

pizzicato behind the nut

mf

1'40"

2'00"

reverb

2'20

fff

②
④⑤

2'40"

mp

ring modulator

improvise using the strings ①②③

6

3'00"

This block contains musical notation and a waveform. At the top left, a treble clef staff shows two eighth notes. Below it, a dynamic marking *f* is shown with a wedge-shaped hairpin. To the right, another dynamic marking *mf* is shown with a similar hairpin. A waveform is positioned between the two staves. Below the waveform, a melodic line is shown on a staff with a shaded gray area underneath it. A vertical dashed line connects the *mf* dynamic marking to the waveform.

3'20"

This block contains musical notation and a waveform. At the top, a treble clef staff shows a long note with a dynamic marking *f* and a hairpin. Below it, a waveform is shown. To the right, another treble clef staff shows a series of notes with a dynamic marking *f* and a hairpin. Below the waveform, a melodic line is shown on a staff with a shaded gray area underneath it. An arrow points from the waveform to the melodic line.

INDEX OF SYMBOLS

Guitar

SP

bridge

M

middle zone

B

hole

ST

keyboard

ST_{XII}

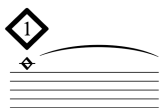
keyboard, rest stroke twelve frets from the note (flautando)



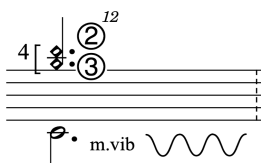
artificial harmonic, fingering and effect sound indicated



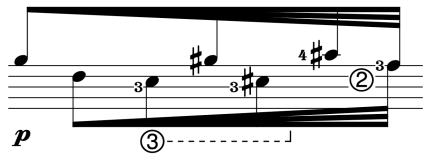
natural harmonic, string and fret are indicate



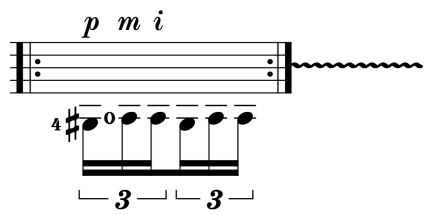
natural harmonic that vibrate by resonance



very vibrato, slowly



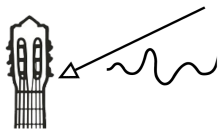
accelerating with two voices



material to be repeated



inharmonic sounds



pizzicato behind the nut



scratch the sixth string with your thumbnail

Flute



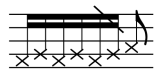
accelerating



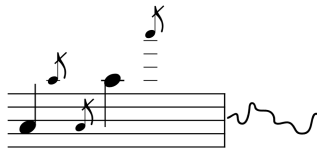
pitch air



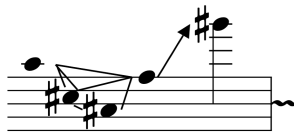
noise air



keyclicks



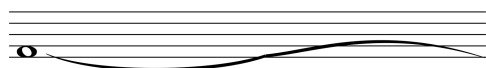
improvisation with these notes (free dynamic and rhythm)



improvisation with these notes combinations (free dynamic and rhythm)



play note and then glissando down

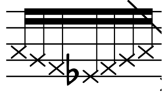


glissando down and up

Tape and generic symbols



improvisation with proposed material



as fast as possible



crescendo from silence



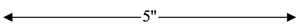
decrescendo until silence



dashed line indicates synchronization points



solid line with arrowhead indicates entry signals



time in spatially proportional representation

10"

time indication

harmonizer ↓4ta

delay 1 - 2

live electronics



sample launched with a foot controller