

Vado in America

Sergio Fabian Lavia

I

Flute

16"

Tape

1

Fl.

31"

Tape

Fl.

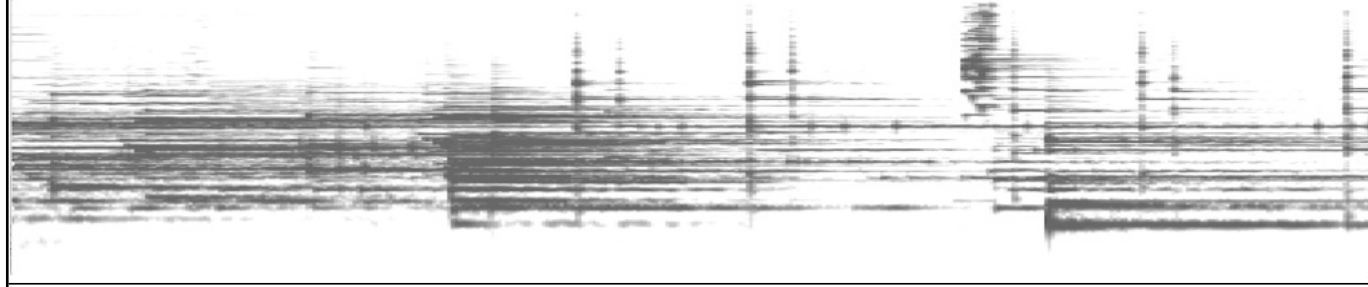
48"

Tape

1'04"

Fl.

Musical notation for Flute (Fl.) in treble clef, measures 1 through 4. The notes are: G4 (quarter), A4 (quarter), B4 (quarter), A4-G4 (beamed eighth notes), F#4 (quarter), E4 (quarter), D4 (half). Dynamics include *mp* under the first note and an accent (>) over the second note. A dashed line connects the *mp* marking to the waveform below.

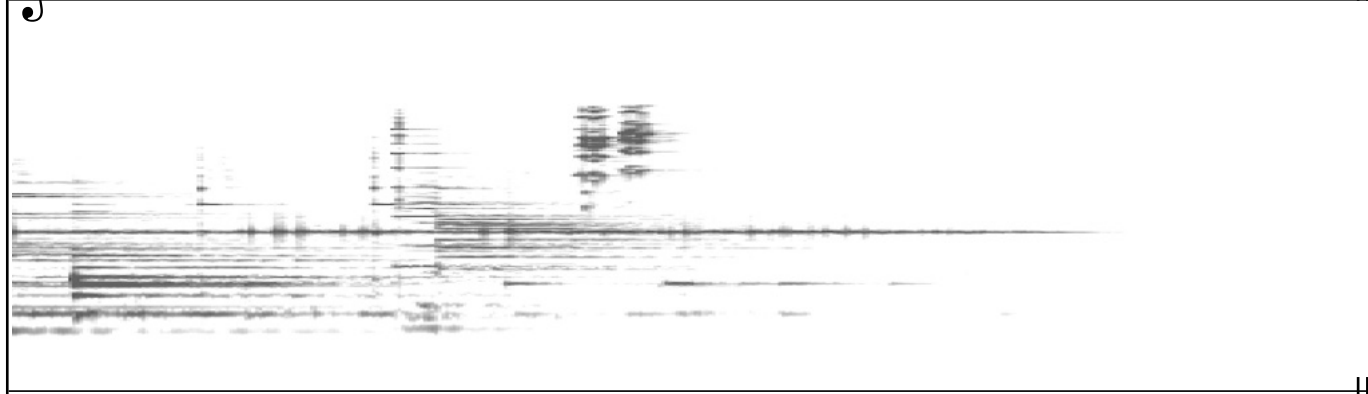


Tape

1'20"

Fl.

Musical notation for Flute (Fl.) in treble clef, measures 5 through 8. The notes are: D4 (half), C4 (half), B3 (half), A3 (half). The notation ends with a double bar line.



Tape

II

Guitar

12 17"

① ② ③ ④ ⑤ ⑥ ⑦ ⑧ ⑨

M *pp* m.vib **M** *p*

Tape

2

Gtr

33"

m.vib

① ② ③ ④ ⑤ ⑥ ⑦ ⑧ ⑨ ⑩ ⑪ ⑫

SP *mp* **B** *p* **ST** **SP** *f*

Tape

Gtr

50"

M *mf*

Tape

III

Flute 16"

Guitar

Tape

3

Fl. 26"

Gtr

Tape

40"

Fl.

Musical notation for Flute (Fl.) in treble clef. The piece begins with a whole rest, followed by a quarter rest, and then a quarter note G4 (marked *p*). This is followed by a quarter note A4, a quarter note B4, and a quarter note C5. A fermata is placed over the C5 note. After a quarter rest, there is a quarter note D5 (marked *mf*), a quarter note E5, a quarter note F5, and a quarter note G5. A slur with the number '5' above it covers the D5, E5, and F5 notes. The piece concludes with a quarter note G5 and a quarter rest.

Gtr

An empty musical staff for Guitar (Gtr) in treble clef, consisting of five lines.

Tape

A single horizontal line representing the Tape track, extending across the width of the page.

IV

14"

Flute

Guitar

Tape

M *mf*

B *mp*

ST XII

Granular synthesis

Tape

28"

Fl.

Gtr

Tape

RH

mp

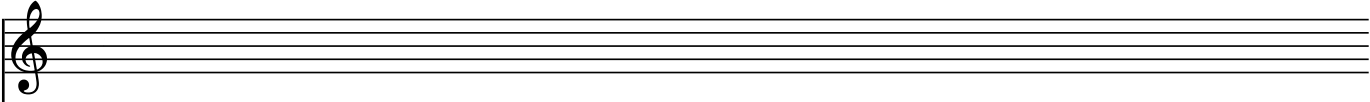
mp

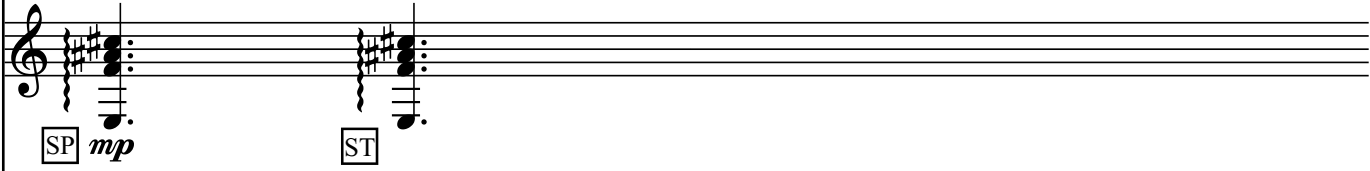
M *mf*

f

Tape

43"

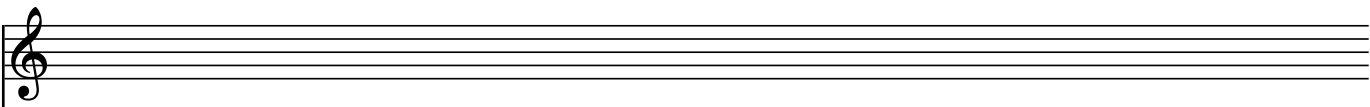
Fl. 

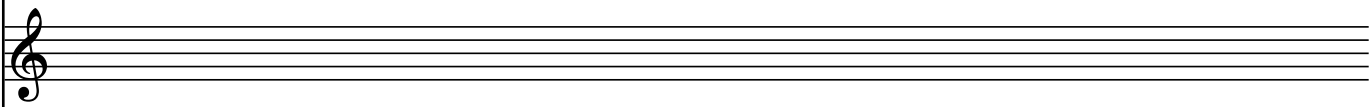
Gtr 

Tape

4

1'00"

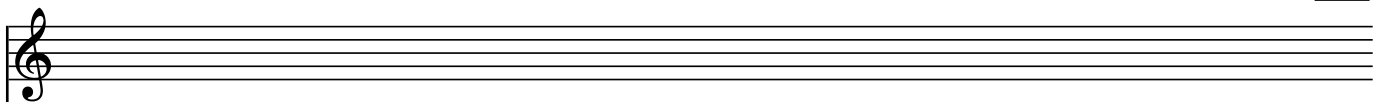
Fl. 

Gtr 

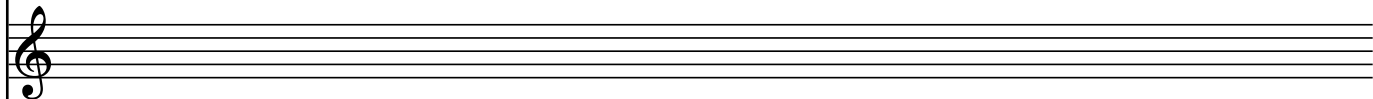
Tape

I'16"

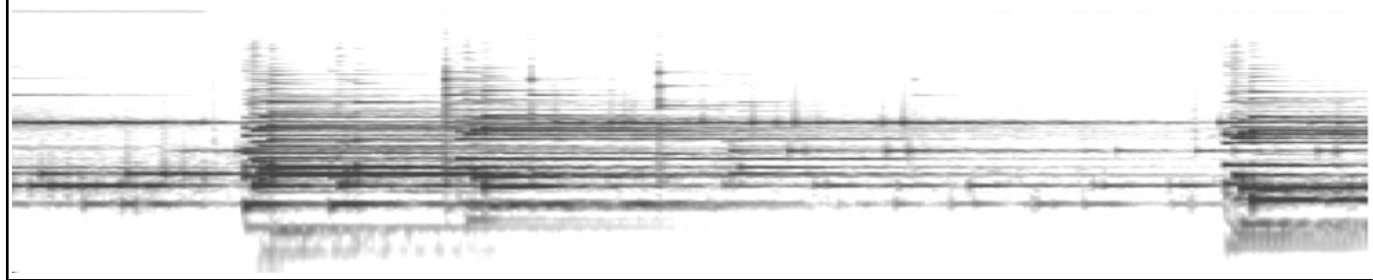
Fl.



Gtr

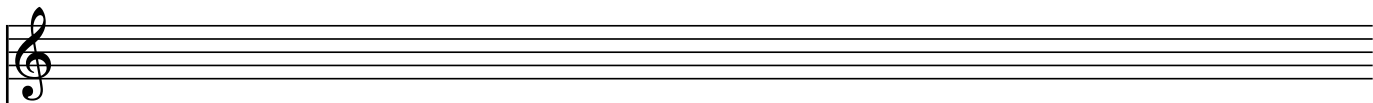


Tape

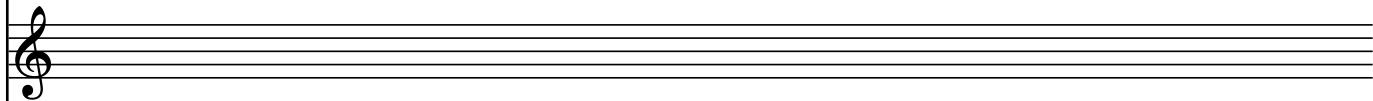


I'32"

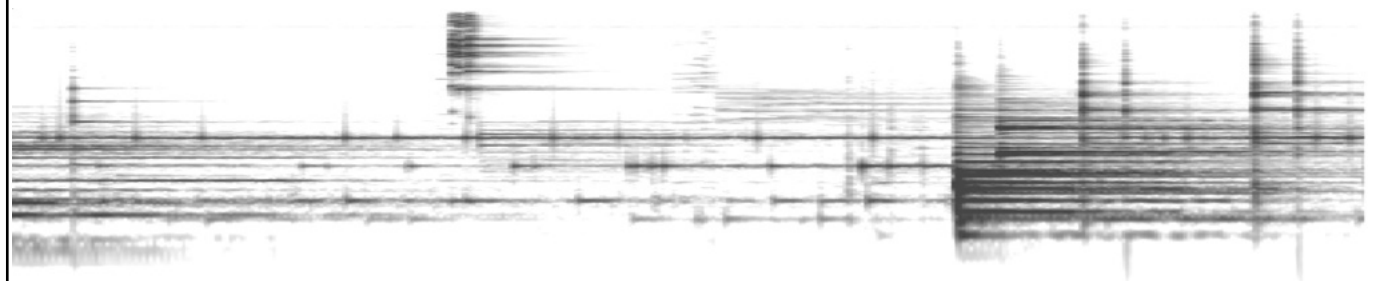
Fl.



Gtr



Tape



1'48"

Fl.

Gtr

Tape

This block contains a musical score for Flute (Fl.) and Guitar (Gtr). Both parts are written on a single treble clef staff. Below the staves is a waveform visualization of the audio recording. The waveform shows a complex, multi-layered sound with many overlapping frequencies, characteristic of a dense musical texture or a heavily processed recording. The labels 'Fl.', 'Gtr', and 'Tape' are positioned to the left of their respective staves.

2'04"

Fl.

Gtr

Tape

This block contains a musical score for Flute (Fl.) and Guitar (Gtr). Both parts are written on a single treble clef staff. Below the staves is a waveform visualization of the audio recording. The waveform shows a complex, multi-layered sound with many overlapping frequencies, characteristic of a dense musical texture or a heavily processed recording. The labels 'Fl.', 'Gtr', and 'Tape' are positioned to the left of their respective staves.

Fl. 2'20"

mf

Gtr

Tape

This block contains a musical score for a Flute (Fl.) and a Tape recording. The Flute part is written on a single staff in treble clef, starting at the 2'20" mark. It features a melodic line with a dynamic marking of *mf* (mezzo-forte). The notes are G4, A4, B4, and C5, with a slur over the last two notes. A vertical dashed line indicates the start of the Flute's entry. Below the staff is a waveform visualization of the audio signal, showing a clear onset of the flute sound at the marked time.

Fl. 2'35"

Gtr

Tape

This block contains a musical score for a Flute (Fl.) and a Tape recording. The Flute part is written on a single staff in treble clef, starting at the 2'35" mark. It features a melodic line with notes G4, A4, B4, and C5. A vertical dashed line indicates the start of the Flute's entry. Below the staff is a waveform visualization of the audio signal, showing a clear onset of the flute sound at the marked time.

2'50"

Fl.

Gtr

Tape

frullato ----- 1

3'05"

Fl.

Gtr

Tape